

volare

L O N D O N L U T O N A I R P O R T



HamptonBrook

Creative Development & Investment

New self-contained office building of 11,610 sq.ft.

volare

LONDON LUTON AIRPORT LU2 9NU

Volare will provide a Grade A self contained office building over four floors, located adjacent to the newly refurbished Percival House.

Specification includes 2.8m floor to ceiling height on each floor, fully raised access floors, VRF air conditioning and LED lighting. Externally, 40 car parking spaces will be provided (1:290 sq.ft.) alongside four electric car charging points and 16 secured cycle spaces (shared with Percival House).



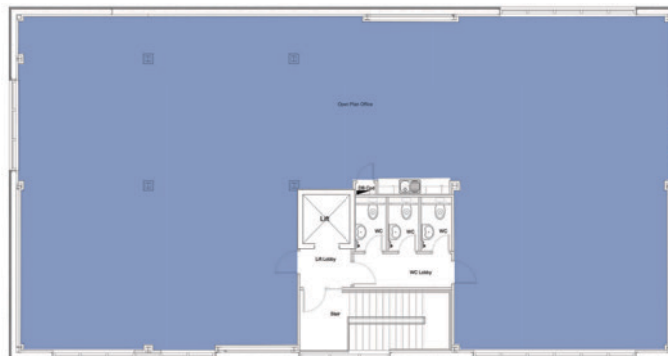
CGI's are for illustration purposes only

GROUND FLOOR



■ OFFICES □ COMMON AREAS

FIRST - THIRD FLOORS



PLANS NOT TO SCALE FOR INDICATIVE PURPOSES ONLY

ACCOMMODATION


Third Floor	2,906 sq.ft.	269.9 sq.m.
Second Floor	2,906 sq.ft.	269.9 sq.m.
First Floor	2,906 sq.ft.	269.9 sq.m.
Ground Floor	2,891 sq.ft.	268.5 sq.m.
Total	11,610 sq.ft.	1,078.2 sq.m.

Estimate based on architects plans



LONDON LUTON AIRPORT 

EASY JET

M1, J10,
MILTON KEYNES,
NORTHAMPTON,
THE NORTH
M25,
CENTRAL LONDON


APPLUS AEROSPACE UK LTD

THOMSON AIRWAYS

ALPHA FLIGHT SERVICES

SIGNATURE FLIGHT SUPPORT

HOLIDAY INN EXPRESS

GULFSTREAM LUTON

SIGNATURE FLIGHT SUPPORT

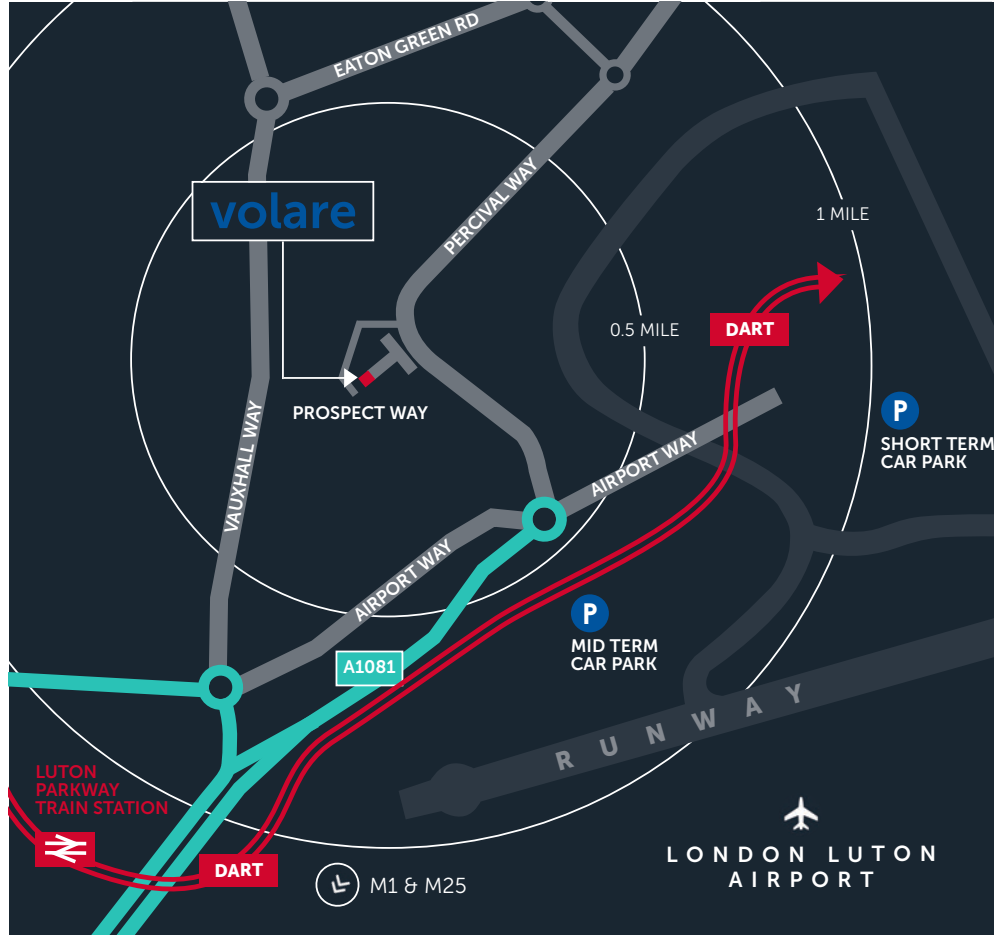
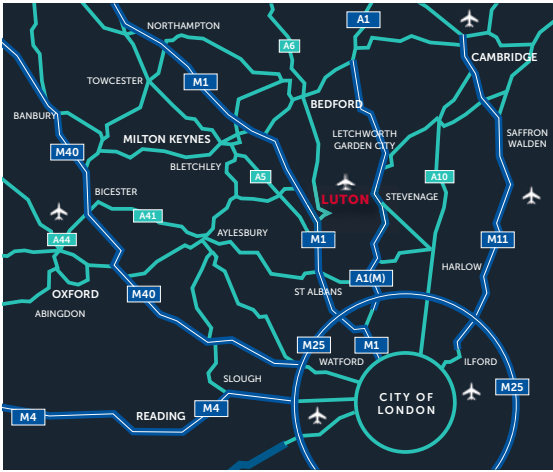
THE BRITISH SCHOOL OF AVIATION

IBIS LONDON LUTON AIRPORT

volare

HOLIDAY INN

percivalhouse



AIRPORTS	
Heathrow	34 miles
City	50 miles
Stansted	52 miles
Gatwick	71 miles

ROAD	
M1(J10)	6 miles
A1(M)	17 miles
M25	18 miles
Milton Keynes	26 miles
London	34 miles

RAIL	
St Pancras London	24 mins
Bedford	27 mins
Kings Cross London	48 mins

FOOT OR CYCLE	
London Luton Airport Terminal	0.5 miles
Luton Parkway Train Station	1.4 miles
Luton Train Station	2.1 miles
Luton Town Centre	2.4 miles

LOCATION

Luton is located 35 miles north of central London, just outside the M25 Motorway and to the east of Junction 10 of the M1 Motorway.

Over the last few years there have been road improvements to the M1 up to Junction 10, along with upgrading of the main access roads from the M1 to the airport itself. Luton has also benefitted from the opening of the new Junction 11A of the M1, providing immediate access to the A5.

Rail access is provided by Luton Parkway Station, located on the Thameslink line with courtesy buses shuttling passengers 1.1 miles (1.8 km) to and from the terminal. The journey time to London St Pancras is 24 minutes and London Blackfriars 43 minutes.

Volare is situated on the main Luton Airport operational aviation site, to the north side of the main runway but is not 'airside'. The building is situated on Prospect Way which is accessed off Percival Way. It is 0.3 miles to the north of the main access road, Airport Way, which is the dual carriageway leading to both the main passenger terminal and the M1 Motorway. The latter then connects to the wider UK motorway network.

ALL ENQUIRIES

Eamon Kennedy
 eamon.kennedy@kirkbydiamond.co.uk
 Lyanne Jacob
 lyanne.jacob@kirkbydiamond.co.uk

A DEVELOPMENT BY

MISREPRESENTATION ACT

Particulars contained in this brochure have been produced in good faith, are set out as a general guide and do not constitute the whole or part of any contract. All liability in negligence or otherwise, arising from use of these particulars are hereby excluded. May 2020.